



National Road Safety Partnership Program

Monthly Bulletin

August 2025 | Newsletter No. 126



"Improving Road Safety Is Simply Good Business"



Proudly hosted by



MONASH
University

ACCIDENT
RESEARCH
CENTRE

Contents

Achievements	3
New Toolbox Talk: Rolling Right - Tyre Care	4
New Q&A's	5
Monthly focus: Tyres	6
News	7
Events	8
Social Media	9
NRSPP Resources.....	10
Useful Links	11



NRSP

Achievements

- The NRSP delivered two partnership webinars in July:
 - **Harnessing Technology for Compliance Productivity:**
Daniel Deveney-Kelly and Nelson Mansfield from Select Plant Australia examine two real-world case studies from major Australian infrastructure projects, one at Sydney Metro Central Station and the other on the Eastern Freeway.
 - **Transform your Fleet Safety | Smart Tech, Safer Fleets:**
Leading experts *Jerome Carslake, Johan Forseke, Tanwir Dadarkar and Simon Donovan* presented an engaging session on how AI, telematics and predictive analytics are reshaping fleet and driver risk management.

- On the 23rd of June, NRSP co-facilitated a CLOCS-A presentation with the Commonwealth's Department of Infrastructure, Transport, Regional Development, Communications, Sport and the Arts Office of Road Safety to states and jurisdictions on the program. The presentation included including the Chartered Institute of Logistics and Transport Australia (CILTA) who deliver CLOCS-A, industry participants, and case studies from NSW and Victoria.

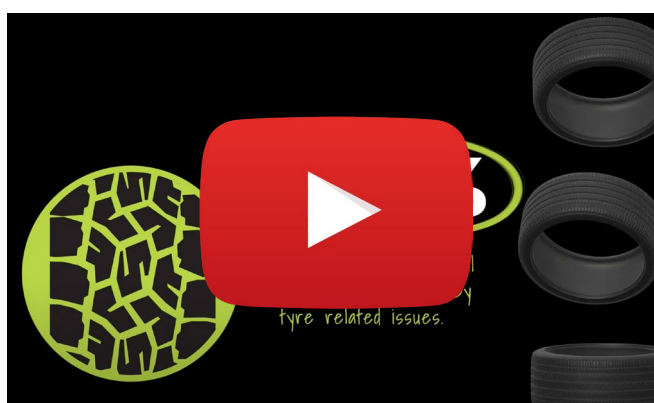
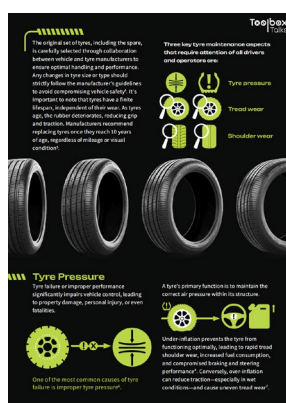
- NRSP will be collaborating with the Australian Fleet Management Association to hold a grey fleet workshop in Perth ahead of the Australasian Road Safety Conference in October. The workshop will demonstrate the program's new Grey Fleet Safety Management Model.





NRSP's Latest Light Vehicle Toolbox Talk is Out Now!

Rolling Right



Tyres are the only point of contact between a vehicle and the road, making their performance vital to vehicle safety roadworthiness. A recent report from National Transport Insurance revealed that tyre-related issues accounted for 59% of the recorded mechanical failures.

While advancements in tyre technology have improved safety and durability, poor tyre maintenance remains a significant risk factor, not just for drivers but for everyone sharing the road.

New Q&A's!



Does Emotional Fatigue Impact Road Safety?

Casey Noseda | Monash University

Q&A

Introduction

Most people know about physical and mental fatigue, but emotional fatigue is just as common and often overlooked. When drivers become emotionally drained by prolonged stress or demanding situations, their safety, engagement, and performance are more likely to suffer.

Drawing on recent research and interviews with multiple NRSP partners, this article explores what emotional fatigue is, why it matters, and how organisations can spot it and protect their employees before serious crashes occur.

The Issue

Road safety is significantly impacted by numerous human factors, which now account for nearly two out of every three serious crashes.¹ Human-factor related crashes are often the result of driver choices and behaviours. Among these factors, fatigue can play a critical role, impairing reaction time, influencing decision making, and overall alertness behind the wheel. As driver fatigue continues to be a key contributor to serious crashes, addressing it is essential in reducing road incidents.



What is fatigue?

Fatigue is a state of exhaustion resulting from the depletion of energy reserves in the body, which interferes with your ability to function at your usual capacity. This may result from not getting enough sleep, poor sleep or being awake for long periods. This can make you feel tired or easily distracted. Fatigue can be thought of like a bank account: it most often occurs when you are constantly making withdrawals (through effort, stress or lack of sleep) without enough deposits (rest, recovery, replenishment).^{2,3}

Most people only attribute fatigue to drowsiness or tiredness caused by poor or inadequate sleep. However, fatigue is a multidimensional construct that can be divided into three major components.^{3,4}

- o Physical fatigue is characterised by a sense of weariness or diminished energy in the body, often associated with tiredness, drowsiness, and muscle weakness.
- o Cognitive fatigue is a feeling of mental exhaustion or decreased cognitive capacity, often leading to difficulty concentrating, slower thinking and reactions, and increased forgetfulness.
- o Emotional fatigue is the state of depleted emotional resources caused by prolonged stress or emotional strain, leading to feeling drained, detached, or overwhelmed.

These components can interact together, or independently, to manifest a variety of symptoms, including:

- o Poor decision-making and problem-solving ability
- o Slower reaction time
- o Reduced concentration
- o Increased irritability or frustration
- o Lack of motivation
- o Impaired cognition
- o Low energy
- o Difficulty multitasking
- o Reduced empathy and compassion.

Emotional Fatigue

Research has extensively examined the effects of physical and cognitive fatigue on driving performance, shaping policy guidelines that set minimum rest breaks and time between shifts.

However, emotional fatigue remains a relatively new area of study. Characteristics of emotional fatigue include decreased motivation, cognitive disengagement and exhaustion. This can impact a driver's ability to engage with their environment and decision-making, especially concerning adherence to safety regulations.⁴

WEBINAR Q&A

nrsp



MANAGING GREY FLEET AND OTHER LESSONS FROM 30 YEARS IN WORK DRIVING SAFETY

The webinar recording is now available for you to watch or share with your team. Watch the recording [here](#).

KEY TAKEAWAYS:

- **Grey fleet is the next big challenge.** With more employees using their own vehicles for work, especially in smaller organisations, ensuring these vehicles are safe, insured, and fit for purpose is essential.
- **A vehicle is a workplace.** Darren unpacked how work health and safety laws apply to any vehicle used for work purposes and what business owners and fleet managers need to know to avoid liability.
- **Prevention starts with visibility.** He outlined the key warning signs of ineffective fleet oversight and highlighted practical tools and systems that support safe and compliant operations.



Click [here](#) to read more.

Click [here](#) to read more.

Monthly Focus: Tyres

When was the last time you proactively and regularly checked your tyres? If you drive for work, does your employee care on road worthiness of your tyres? Do you?

Tyres lead a hard life and amongst the hardest wearing elements on any vehicle and in many cases can be taken for granted. Think about the range of conditions which tyres and wheels have to operate and perform in and the punishment they must tolerate such as kerb and potholes strikes.

Failure of the tyre at any point can have catastrophic outcomes for the driver especially if driving at speed or remotely. Likewise, incorrectly inflated tyres impacts performance of the vehicle, resulting in reduced safety outcomes and increase operational costs.

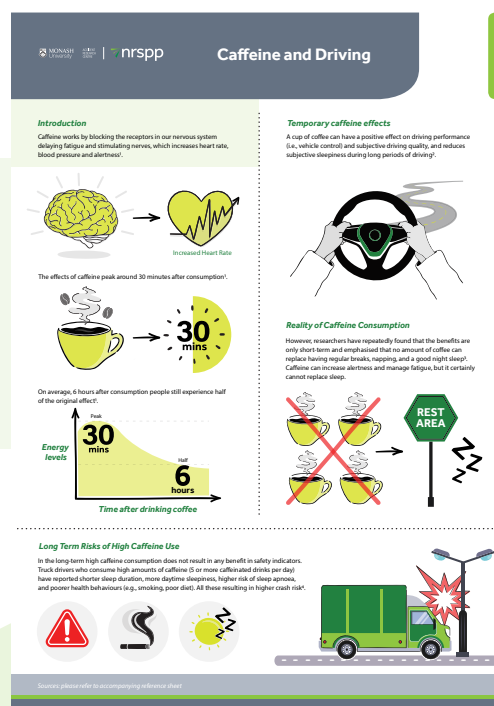
Organisations have a legal requirement to provide a safe workplace for their workers which includes the vehicle. This at a minimum, means being road worthy which captures tyres and wheels.

From a personal risk sense, add in the wet weather sweeping the country, how about you check your tyres and make it a habit.

Monthly Feature: Quick Fact

Caffeine can have positive, short-term effects on driving, by reducing fatigue and improving vehicle control and alertness. However, long-term consumption increases the risk of various poor health habits.

Click [here](#) to read more.



NRSP News

Lollipop Workers? Really, 7 News? Time to Raise the Standard

Traffic controllers are not “lollipop workers.” They are trained safety professionals working long hours, in sometimes dangerous conditions, to keep every single road user (pedestrians, drivers, cyclists, tradies, and yes, even journalists) safe from harm.

[Read more...](#)



Coming Soon: ADAS Guidance Service Launch on 13 August

The ADAS Guidance Service is a new national platform designed to help drivers, licensing authorities and the broader community better understand and safely use Advanced Driver Assistance Systems (ADAS).

[Read more...](#)



NRSP Events

August

Webinar: How Sodexo's award-winning approach to proactive safety is preventing fatigue and distraction-related incidents.

Date: August 21st, 11:00am 2025

Location: Online, Zoom

Organisation: Sodexo

[Register here](#)

Learn about how Sodexo Australia's focus on prevention and proactive safety virtually eliminated fatigue, high-level speeding and distraction rapidly, targeting light vehicle and bus drivers.



Webinar: Engaging young workers in road safety - firsthand insights from young Australians

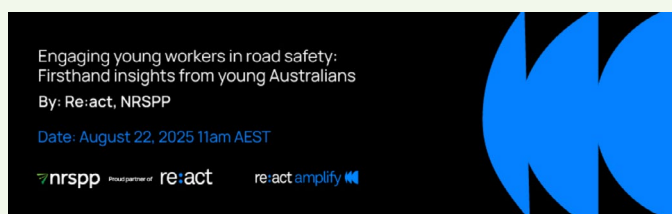
Date: August 22nd, 11:00am 2025

Location: Online, Zoom

Organisation: Re:act

[Register here](#)

In this unique NRSP-Re:act webinar, 17-25 year old students and workers will share their research and insights from the 2025 Re:act road safety education program, where young people create peer-to-peer safety campaigns for other young people. The topic in 2025 is wearing seatbelts and correctly.



October

2025 Australasian Road Safety Conference

Date: October 20 - 23, 2025

Location: Perth, Western Australia

Organisation: Australian College of Road Safety

[Register here](#)

Join Australasia's leading road safety and injury prevention researchers, practitioners and policy makers for the 2025 Australasian Road Safety Conference.



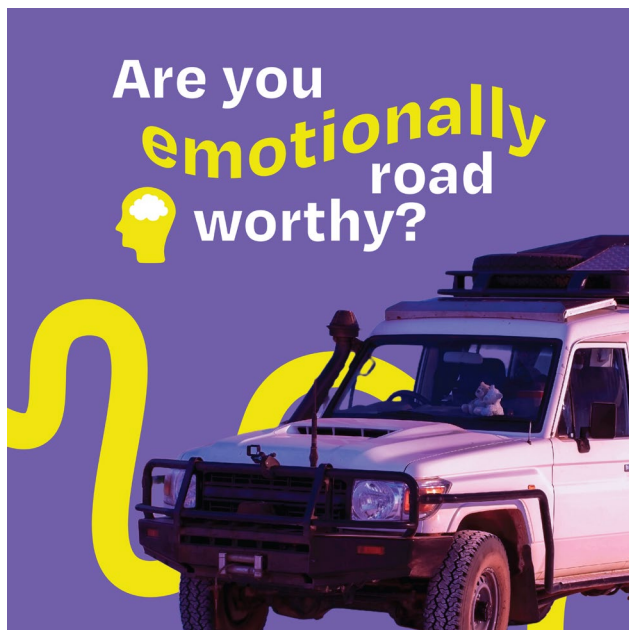
NRSPP Social Media



[Download here...](#)



[Download here...](#)



[Download here...](#)



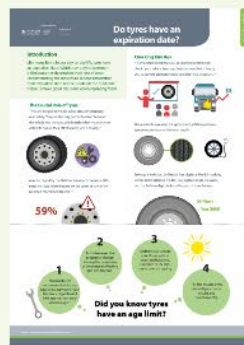
[Download here...](#)

NRSPP Resources

NRSPP Quick Fact: Do tyres have an expiration date?

It is crucial to regularly assess your tyres for their integrity and to prevent premature wear and high-risk situations.

[Read more here](#)



NRSPP Heavy Vehicle Toolbox Talk: Tyres & wheels

Good tyre performance not only keeps the wheels turning, it also keeps you safe on the road.

[Read more here](#)



Transport Victoria: VSI 16 Tyre maintenance and repair

Tyres must be carefully examined for any damage or faults which would make it unsafe for further use. This guideline will direct you to the road safety regulations.

[Read more here](#)



Safe Work NSW: Split rim wheels

Wheels come in different sizes and can explode if not pressurised, inflated or deflated correctly. You also need to be careful when checking or removing tyres, especially if they have split rims.

[Read more here](#)



Useful Links

- [Recycling tyres from vehicles - Planet Ark Recycling Near You](#)



- [Tyre Stewardship Australia](#)



- [The Guardian | London's low-traffic zones 'cut deaths and injuries by more than a third'](#)



- [Drive | Buckle up as new Australian road rules take effect starting July 1](#)



Acknowledgements



MONASH
University

ACCIDENT
RESEARCH
CENTRE

NRSP Core Funders



Transport
for NSW



State Insurance
Regulatory Authority



Queensland
Government



GOVERNMENT OF
WESTERN AUSTRALIA



ROAD
SAFETY
COMMISSION



Transport
Accident
Commission



ACT
Government

Programs Governed by NRSP

VSRG

UCSR

★★★★★
USED CAR
SAFETY RATING

NTARC